

INDOOR

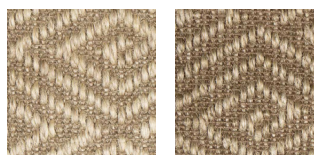
KAIRO

A woven carpet made of high-quality sisal that is elegant, durable, and suitable for indoor use on floors with or without underfloor heating in entrances, hallways, kitchens, dining rooms, home offices, bedrooms, walk-in closets, and living rooms, as well as in commercial areas with light use. It features a pattern called "goose-eye" and, despite its distinctive pattern, presents a very sober expression.

Kairo is available in two colors. The thickness is approximately 9 mm, and the maximum width is 400 cm. It is delivered either as a wall-to-wall carpet or as a custom-made rug edged with INVISILOC®, alternatively with one of our bindings in suede imitation, leather, linen, or cotton.



Pile fibre	Sisal
Product definition	Woven
Backing	Latex
Roll width	400 cm
Total thickness	9 mm
Total weight	2 800 g/m ²



2060

2070



NTK Atelier is a brand of
ENGLUND-GRUPPEN FLOORING AB
Kryptogatan 20 | SE-431 53 Mölndal | tel +46 31 670 185 | infontk@englund-gruppen.se | www.ntkatelier.se
Showroom Stockholm: Rosenlundsgatan 38 F | Showroom Gothenburg: Kyrkogatan 20-22